

Here's basic information about the English alphabet and the uses of alphabet letters in relation to speech sounds in phonics/spelling:

In printed or written language, sounds are represented by "letters of the alphabet."

From left to right in "alphabetical order," the 26 letters of the alphabet are:

| | | | | | | | | | | | | |
|---|---|---|---|---|---|---|---|---|---|---|---|---|
| a | b | c | d | e | f | g | h | i | j | k | l | m |
| n | o | p | q | r | s | t | u | v | w | x | y | z |

The 26 letters have *names*. Here are their names printed in letter spelling.

| | | | | | | |
|----------|--------------|---------|-----------|---------|---------|---------|
| a = ay | b = bee | c = see | d = dee | e = ee | f = ef | g = jee |
| h = aich | i = ayee | j = jay | k = kay | l = el | m = em | n = en |
| o = oh | p = pee | q = kyu | r = ar | s = es | t = tee | u = yoo |
| v = vee | w = dubelyoo | x = eks | y = wayee | z = zee | | |

In print or writing, alphabet letters can have two forms or shapes: "upper case" and "lower case." In block printing, here are the two forms of each letter.

| | | | | | | | | |
|-------|-------|-------|-------|-------|-------|-------|-------|-------|
| A = a | B = b | C = c | D = d | E = e | F = f | G = g | H = h | I = i |
| J = j | K = k | L = l | M = m | N = n | O = o | P = p | Q = q | R = r |
| S = s | T = t | U = u | V = v | W = w | X = x | Y = y | Z = z | |

In writing by hand or typing, most people use capital (upper-case) letters like A, B, C, D, E, F, G, H (to Z) only at the beginning of names and sentences.

Only a few people use all capital letters for large block-letter printing.

In "flowing handwriting," many people use *cursive* upper and lower case letters.

Here are all four possible forms of each of the 26 letters of the alphabet.

(Upper and lower-case cursive letters = upper and lower-case block letters.)

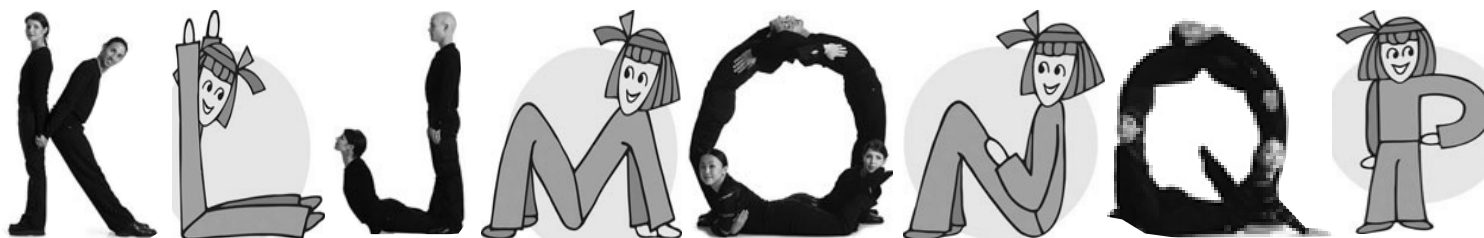
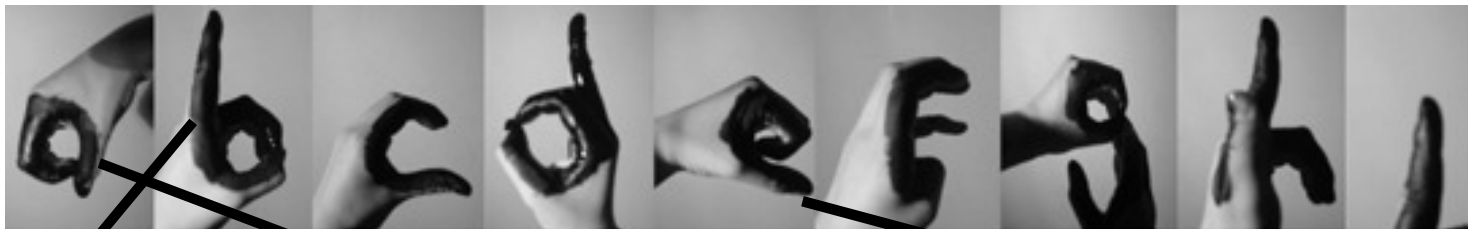
| | | | | | | |
|---------|---------|---------|---------|---------|---------|---------|
| Aa = Aa | Bb = Bb | Cc = Cc | Dd = Dd | Ee = Ee | Ff = Ff | Gg = Gg |
| Hh = Hh | Ii = Ii | Jj = Jj | Kk = Kk | Ll = Ll | Mm = Mm | |
| Nn = Nn | Oo = Oo | Pp = Pp | Qq = Qq | Rr = Rr | Ss = Ss | Tt = Tt |
| Uu = Uu | Vv = Vv | Ww = Ww | Xx = Xx | Yy = Yy | Zz = Zz | |



INSTRUCTIONS

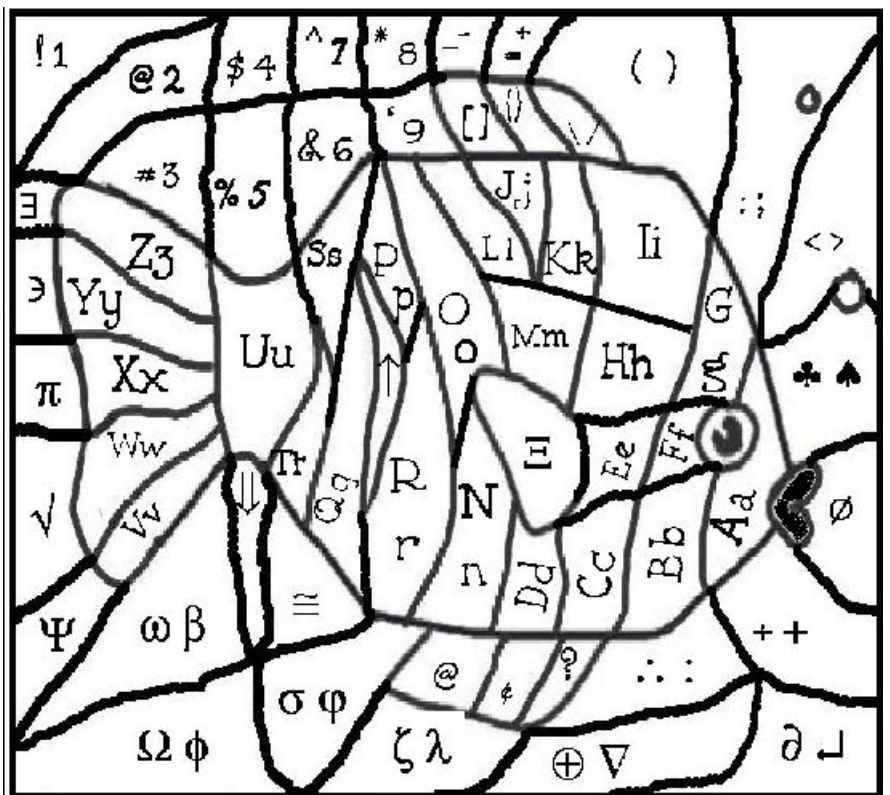
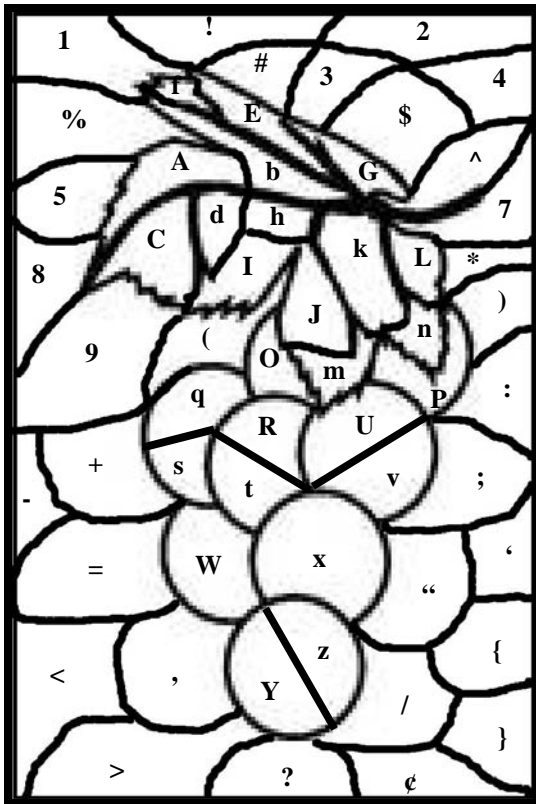
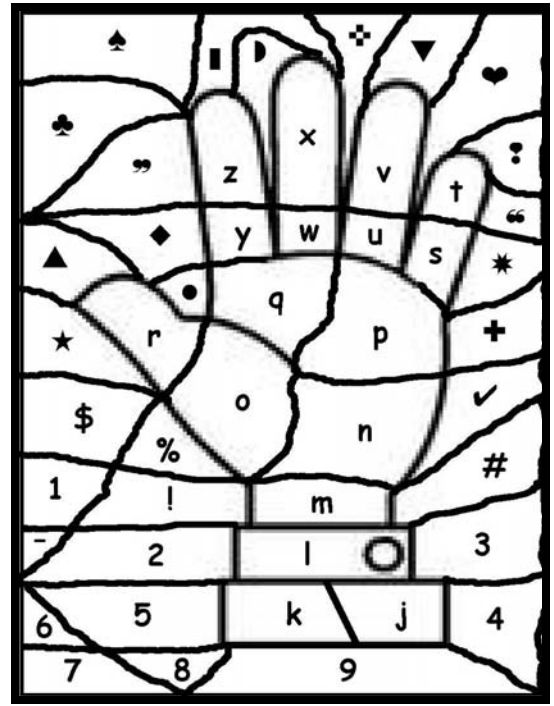
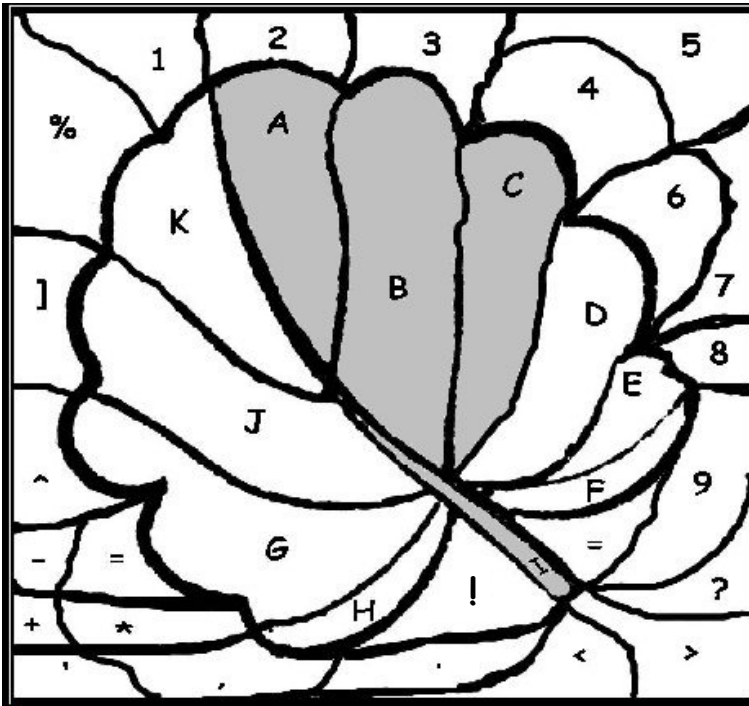
With lines, connect the "hand shapes" of 26 lower-case letters with the "body shapes" of 26 upper-case (capital) letters in alphabetical order. Name the letters.

In alphabetical order, can you form the letters with your hands and fingers? With your arms, legs, and body position? Can others see and name the letters you show?



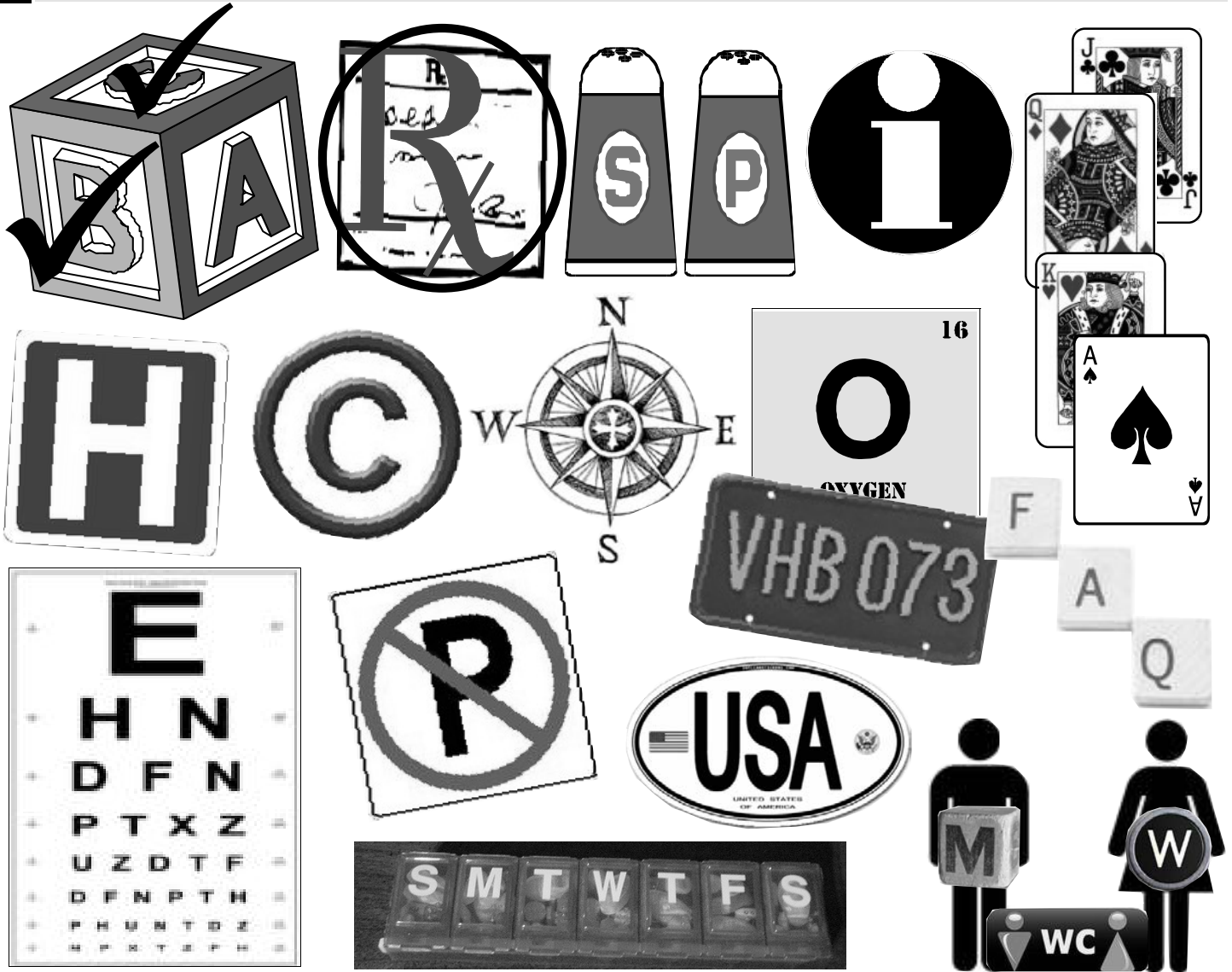
► For each picture, shade in all the spaces with alphabet letters in them. Don't shade the spaces with numbers or other symbols. (Leave them white.)

► What shapes do the shaded spaces form? Name the letters inside the shape. Are they upper- or lower-case or both? Can you say them in alphabetical order or in reverse?



INSTRUCTIONS

- Which letters of the English alphabet can you find in the pictures? Check (✓) or circle the big letters. Read them aloud. Can you tell what they mean or name the objects?
- How many of each letter did you find? Write the numbers on the lines below the 26 letters at the bottom of the page. Can you find letters like these in "real life," too?



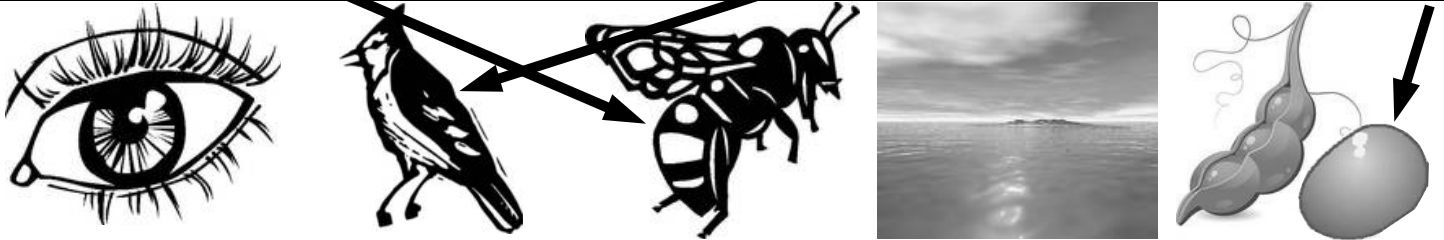
| | | | | | | | | | | | | |
|-------|-------|-------|-------|-------|-------|-------|-------|-------|-------|-------|-------|-------|
| a | b | c | d | e | f | g | h | i | j | k | l | m |
| _____ | _____ | _____ | _____ | _____ | _____ | _____ | _____ | _____ | _____ | _____ | _____ | _____ |

| | | | | | | | | | | | | |
|-------|-------|-------|-------|-------|-------|-------|-------|-------|-------|-------|-------|-------|
| n | o | p | q | r | s | t | u | v | w | x | y | z |
| _____ | _____ | _____ | _____ | _____ | _____ | _____ | _____ | _____ | _____ | _____ | _____ | _____ |

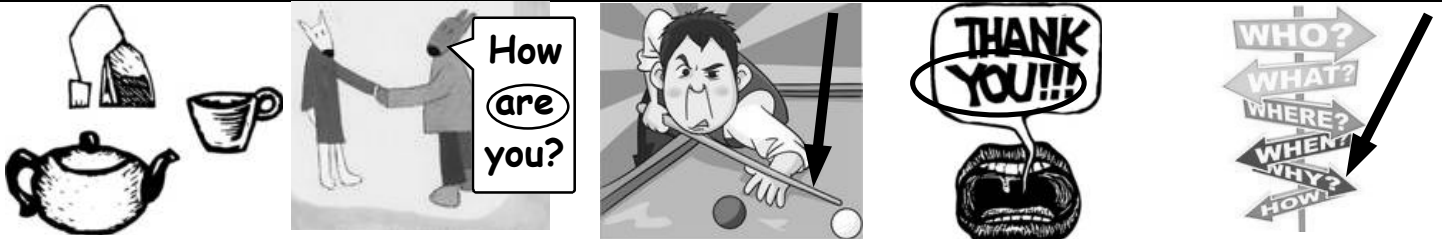
INSTRUCTIONS

➔ A few vocabulary words—like *be*, *I*, *cue*, *VW (Volkswagen)*, and *WC (water closet)*—sound like the names of one or more letters of the alphabet. Say the name(s) of the letter(s) in each box aloud. Draw an arrow → to the picture of the word named by those sounds. Pronounce the words the same as the letter names.

| | | | | |
|---|---|---|---|---|
| B | C | I | J | P |
|---|---|---|---|---|



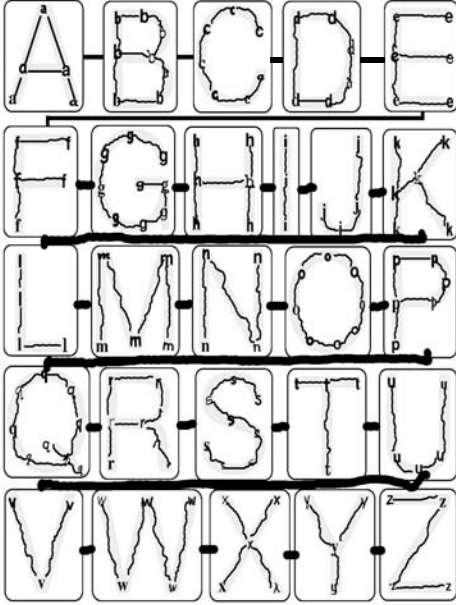
| | | | | |
|---|---|---|---|---|
| Q | R | T | U | Y |
|---|---|---|---|---|



| | | | | |
|----|----|----|----|----|
| ER | MD | TV | US | VP |
|----|----|----|----|----|



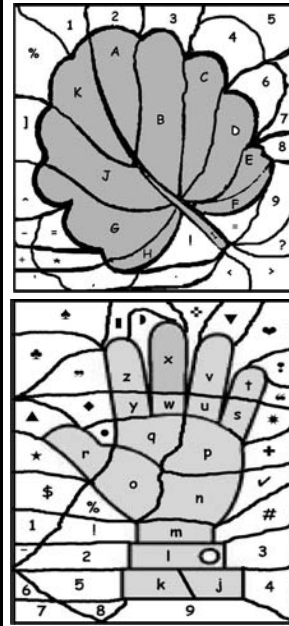
Letters of the Alphabet
Letter Lines, page 7



Letters of the Alphabet
Letter Shapes, page 8



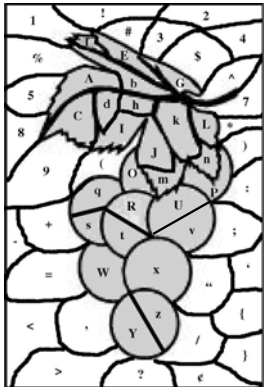
Letters of the Alphabet
Letter Spaces, page 9



A B C D
E F G H
I J K
= a leaf

z y x w
v u t s r
q p o n
m l k j
= a hand

Letters of the Alphabet
Letter Spaces, page 9



A b C d E f
G j I J k L
m n O p q
R s t U v W
x Y z =
a bunch
of grapes

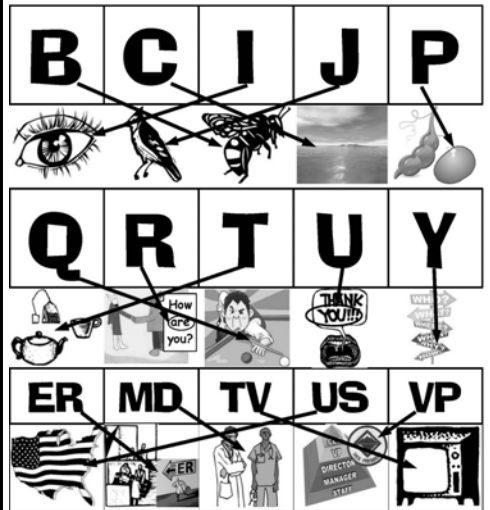
Letters of the Alphabet
Letter Finds & Counts, page 10



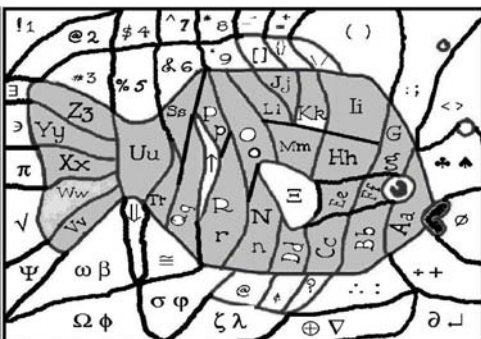
| | | | | | | | | | | | | |
|---|---|---|---|---|---|---|---|---|---|---|---|---|
| a | b | c | d | e | f | g | h | i | j | k | l | m |
| 5 | 2 | 3 | 1 | 2 | 5 | 0 | 3 | 1 | 2 | 1 | 0 | 2 |
| n | o | p | q | r | s | t | u | v | w | x | y | z |
| 3 | 2 | 3 | 2 | 1 | 5 | 3 | 1 | 1 | 4 | 1 | 0 | 1 |

ABC = a block. RX = a prescription.
S & P = salt & pepper shakers.
i = information. J Q K A = Jack, Queen,
King, Ace. H = hospital. c = copyright.
O = Oxygen. FAQ on tiles = Frequently
Asked Questions. VHB on a license plate.
EHNDFNPTXZUZ DTFDFNPTH on an
eye chart. P = (No) Parking sign. USA =
United States of America. SMTWTFS =
Sunday, Monday, Tuesday, Wednesday,
Thursday, Friday, Saturday on a pill box.
WC = water closet. M = Men. W = Women.

Letters of the Alphabet
Letter Words, page 11



B = bee C = sea I = eye
J = jay P = pea Q = cue
R = are T = tea U = you
Y = why
ER = emergency room
MD = medical doctor
TV = television
US = United States
VP = vice president



Aa Bb Cc Dd Ee Ff Gg Hh Ii
Jj Kk Ll Mm Nn Oo Pp
Qq Rr Ss Tt Uu Vv Ww
Xx Yy Zz - a fish